

Billboard Pro Series

Billboard Pro Series provide crystal clear image for the ultimate visual experience through color matched LEDs.

High contrast display in Billboard Pro Series enhance the viewing quality regardless of viewing distance option from 4mm to 16 mm; plus, the easy access via rear cabinet doors, allows quick maintenance when needed.

Designed with IP65 standard protection, protect the screen for long lasting quality in harsh conditions

Billboard Pro Series is ideal solution for full outdoor, building top, highway, stadium, stand alone billboard for professional used.

Professional Grade Specifications



Gold Wire



Extra High Refresh Rate
3840 Hz



Long Lasting
Power Supply
with ISO Standard



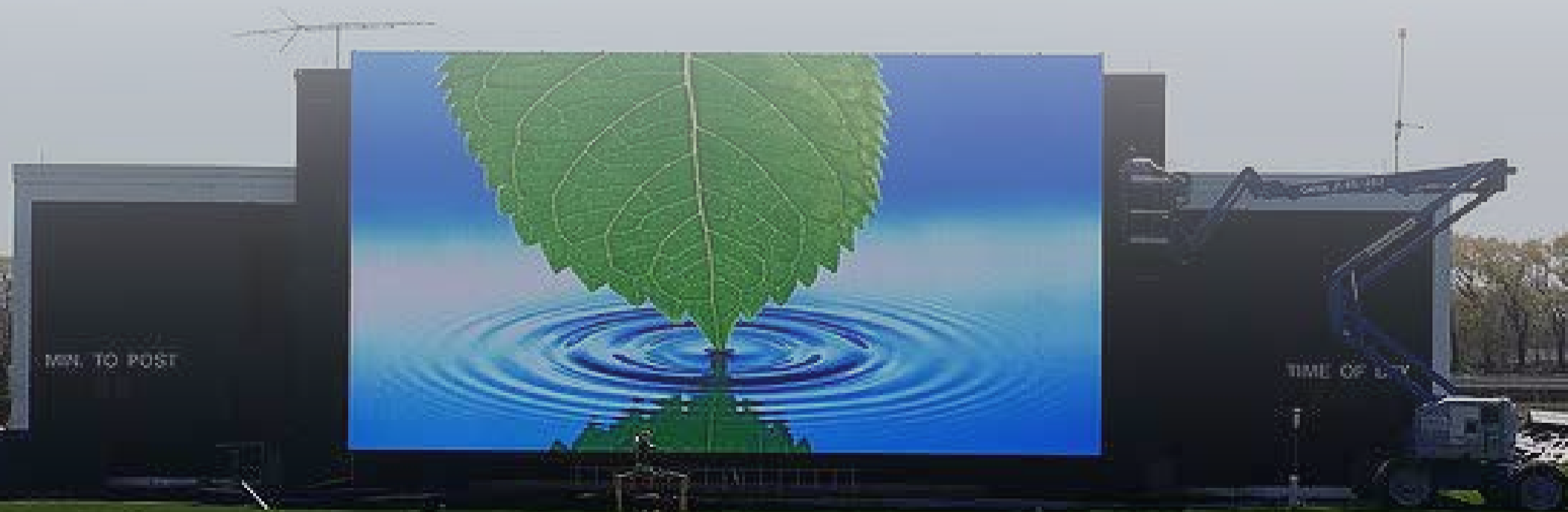
Aluminum Cabinet



Redundant Signal

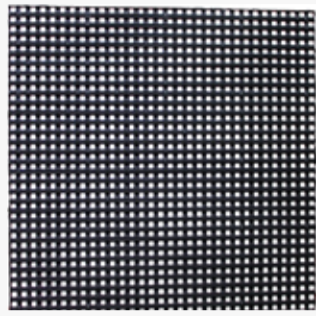


Redundant
Power Supply





192x192 mm Module



P6 Rear Service LED Display,
200% reliability assured by power & data redundancy.



256x192 mm Module



P8 Rear Service LED Module

Internal Wiring



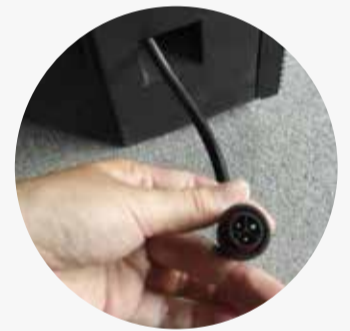
Data cable and power cable goes inside the cabinet via the cabinet side hole

Secured Design



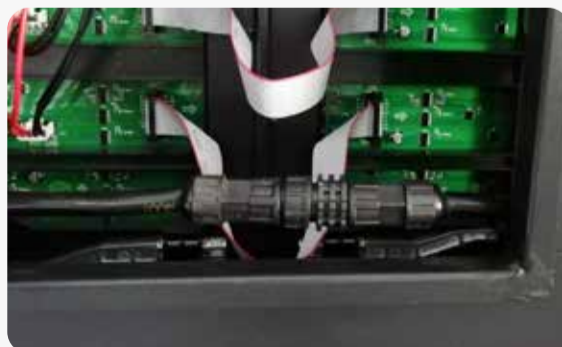
Data cable and power cable goes inside the cabinet via cabinet up and down holes

Full Weather Proof Connection

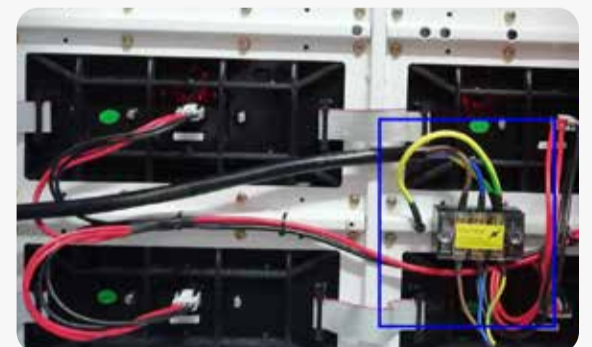


Female and Male fast connectors for the power cable

Flexible cabinet size, All screen size fits



Power Connector Type
Directly plug in, easy install.



Power Terminal Block Type
You have to connect the power cable with power terminal block one by one.

Billboard Pro Series

P6 Outdoor



Module Specifications

Pixel Pitch (mm)	6
Pixel Configuration	Nationstar SMD2727
Module Resolution (W*H dots)	32*32
Module Pixels (dots)	1024
Module Size (W*H mm)	192*192

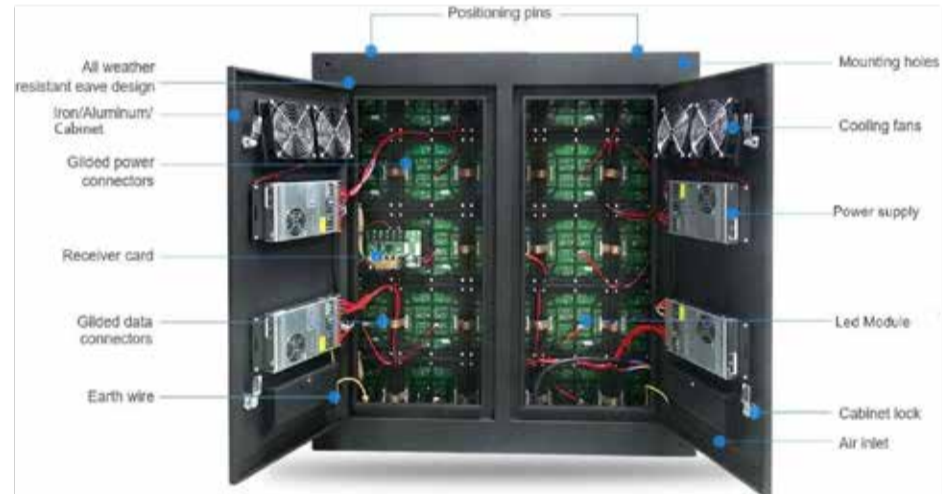
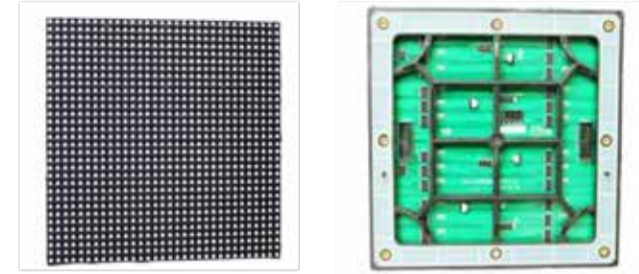
Cabinet Parameters

Cabinet Configuration (Module quality W*H)	6*6
Cabinet Size (W*H mm)	1152*1152
Cabinet Resolution (W*H dots)	192*192
Module Quality (pcs)	36
Cabinet Pixels (dots)	36,864
Pixel Density	27,889 dots/m2
Material	Aluminum
Cabinet Weight (kg/sqm)	32.8

One Screen Parameters

Brightness	6,000 nits
Contrast Ratio (Max/Min)	8,000
Driving Method	1/8 Scanning
View Angle	Horizontal 160° / Vertical 120°
Min Viewing Distance	6 m
Brightness Control	16 bit
Refresh Rate	3840 Hz
Screen Wiring	Gold Wiring
Frame Frequency	50 -- 60 Hz
Input Voltage	AC220V/50Hz
Defects Rate	<= 0.00001
Power Consumption	Max: 780/m3 Average:280W/m3
Cabinet Weight	32.8 kg/sqm
MTBF	>10,000 hours
Life Span	>= 100,000 hours
Module Display Brightness Uniformity	<3%
Earth Leakage Current	<3 mA
Protective Grade	IP65
Temperature-operating	-20°C ~ 65°C
Humidity-operating	10% ~ 95%

P6 Rear Service LED Module



Project Reference in USA

Billboard Pro Series

P8 Outdoor



Module Specifications

Pixel Pitch (mm)	8
Pixel Configuration	Nationstar SMD3535
Module Resolution (W*H dots)	32*16
Module Pixels (dots)	512
Module Size (W*H mm)	320*160

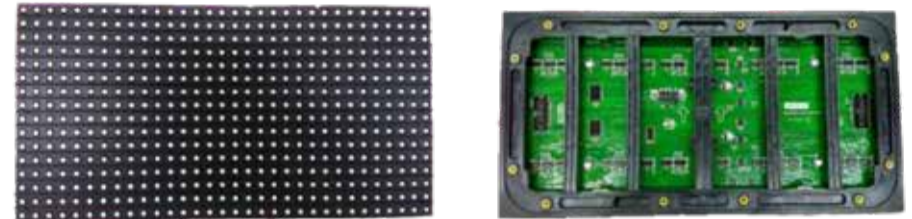
Cabinet Parameters

Cabinet Configuration (Module quality W*H)	3*6 / 4*8
Cabinet Size (W*H mm)	960*960 / 1024*1024
Cabinet Resolution (W*H dots)	120*120 / 128*128
Module Quality (pcs)	18 / 32
Cabinet Pixels (dots)	14,400 / 16,384
Pixel Density	15,625 dots/m ²
Material	Aluminum
Cabinet Weight (kg/sqm)	36 / 32.8

One Screen Parameters

Brightness	6,000 nits
Contrast Ratio (Max/Min)	8,000
Driving Method	1/8 Scanning
View Angle	Horizontal 160° / Vertical 120°
Min Viewing Distance	8 m
Brightness Control	16 bit
Refresh Rate	3840 Hz
Screen Wiring	Gold Wiring
Frame Frequency	50 -- 60 Hz
Input Voltage	AC220V/50Hz
Defects Rate	<= 0.00001
Power Consumption	Max: 780W/m ³ Average:280W/m ³
Cabinet Weight	32.8 kg/sqm
MTBF	>10,000 hours
Life Span	>= 100,000 hours
Module Display Brightness Uniformity	<3%
Earth Leakage Current	<3 mA
Protective Grade	IP65
Temperature-operating	-20°C ~ 65°C
Humidity-operating	10% ~ 95%

P8 Rear Service LED Module



Project Reference in USA

Premium Power Supply



ISO standard power supply with FCC CE standard

Features

- Withstand 300VAC surge input for 5 second
- Protections : Short circuit / Overload / Over voltage / Over temperature
- Forced air cooling by built-in DC fan
- Built-in cooling Fan ON-OFF control
- 1U low profile
- Withstand 5G vibration test
- LED indicator for power on
- 100% full load burn-in test
- High operating temperature up to 70°C
- Operating altitude up to 5,000 meters
- High efficiency, long life and high reliability

