

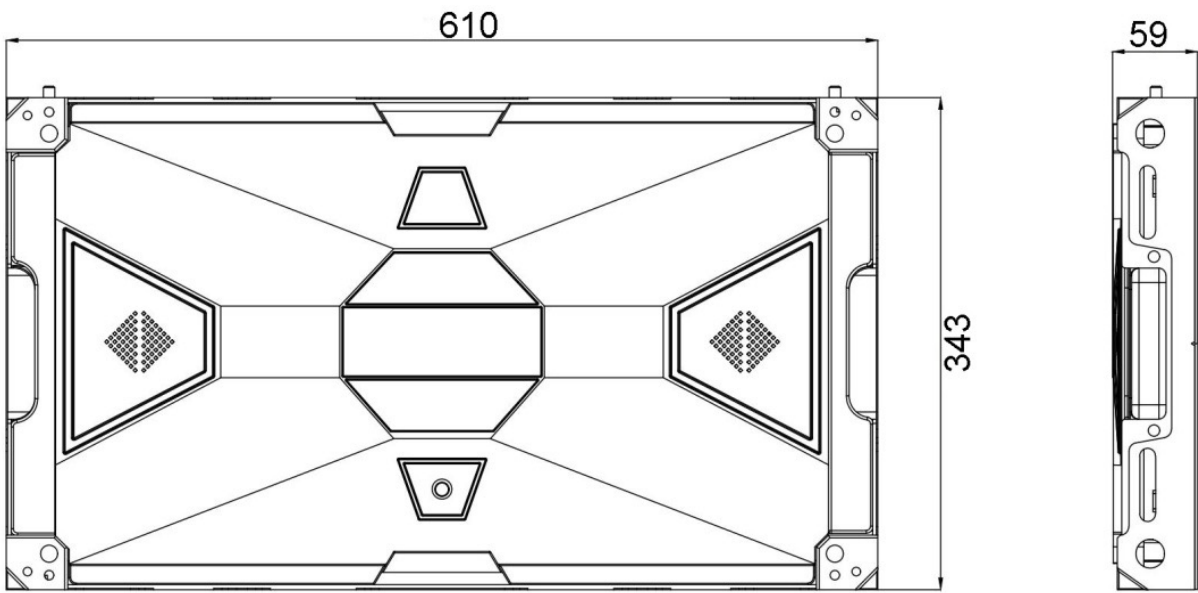


Gracier Pro

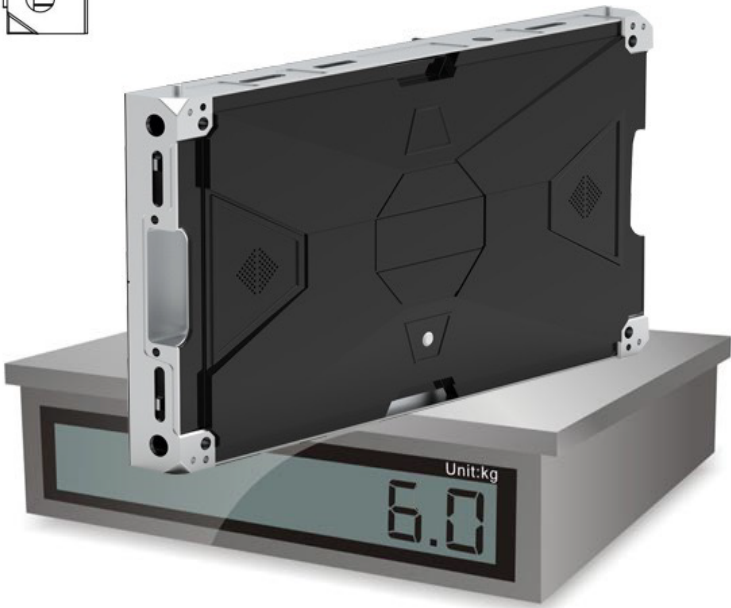
Redundant Signal
(Dual receiving card)

P1.2 – P2.5 The most durable fine pitch LED
Native 16:9 ratio

◆ Ultra Light Weight and Thin Die casting Aluminum Cabinet



Cabinet thickness include module is only 59 mm

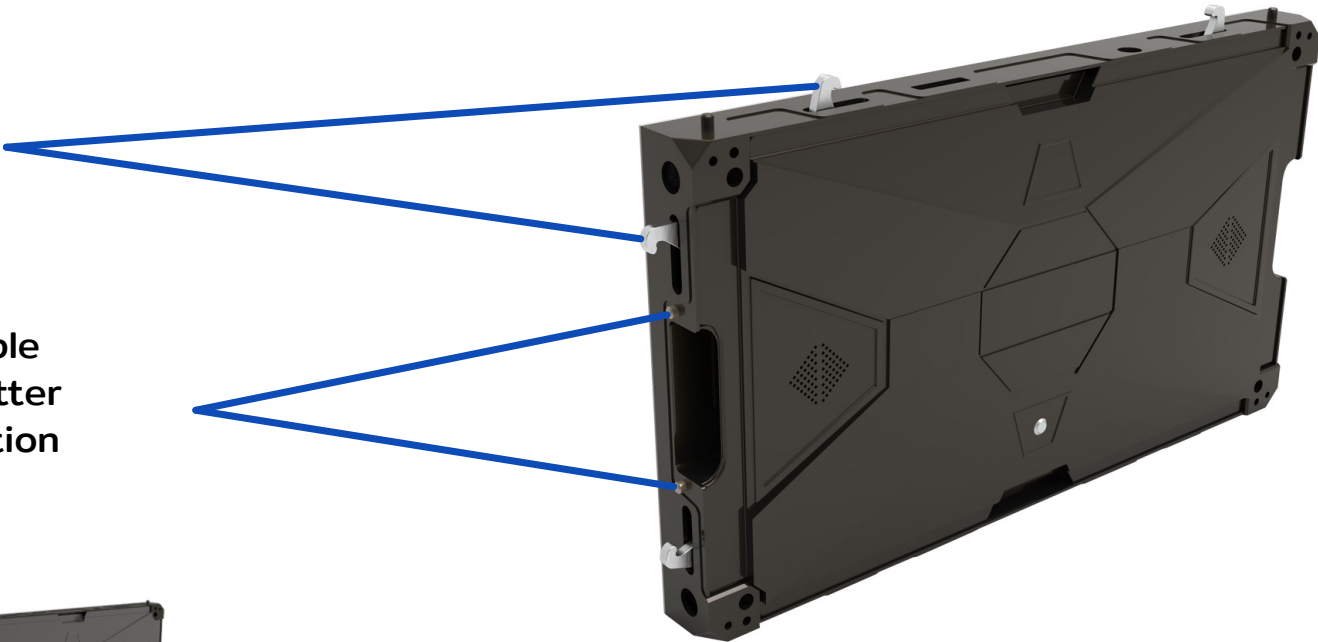


Cabinet weight is only 6 kgs

◆ Join cabinet together

Internal lockers enable join cabinets together quickly and tightly

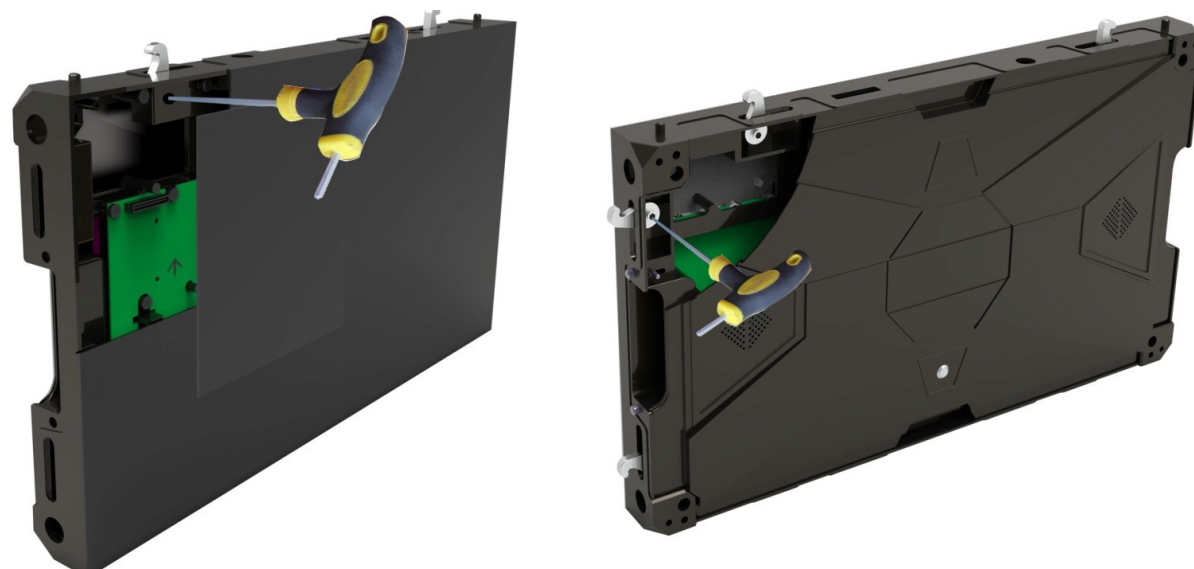
Location pins are also available at side of the cabinet for better alignment and easier installation



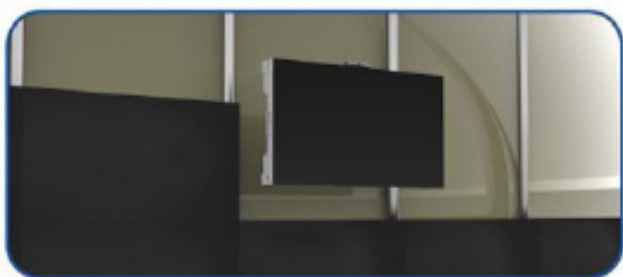
Precise die casting aluminum cabinet with internal lockers make seamless splicing joint

Signal cables and power cables are through inside of the cabinets. No external cables which has more stability

◆ Installation



Can lock cabinets from both front and rear side with tool



From front installation



From behind installation

Support both front and rear side installation

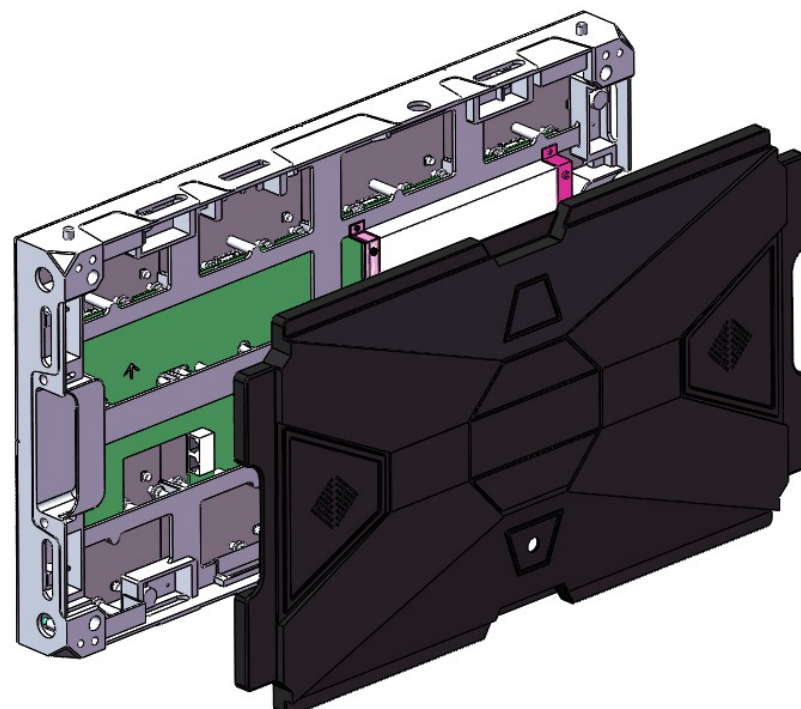
For rear side installation, do not need remove modules

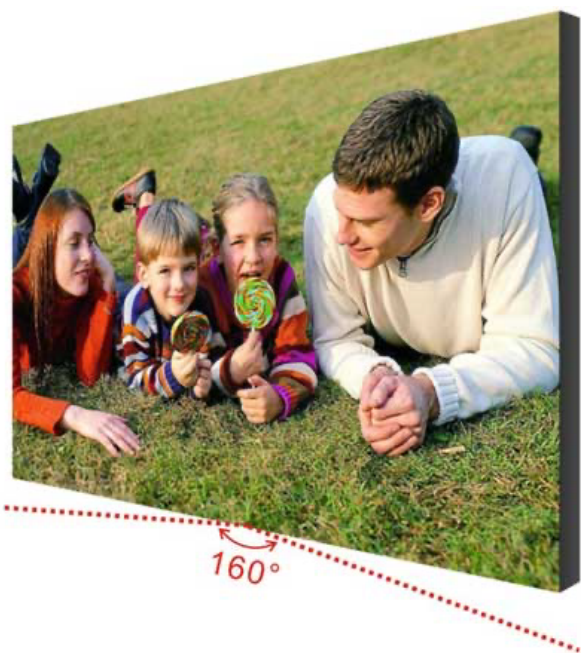


Magnetic modules support both front and rear service
Receive card, power supply can be serviced from front as well

The back door can be opened and do signal cable
and power cable connection from rear side
without removing any modules for rear side installation

Internal power cable connector
It is very convenient to finish power cables connection
between cabinets quickly





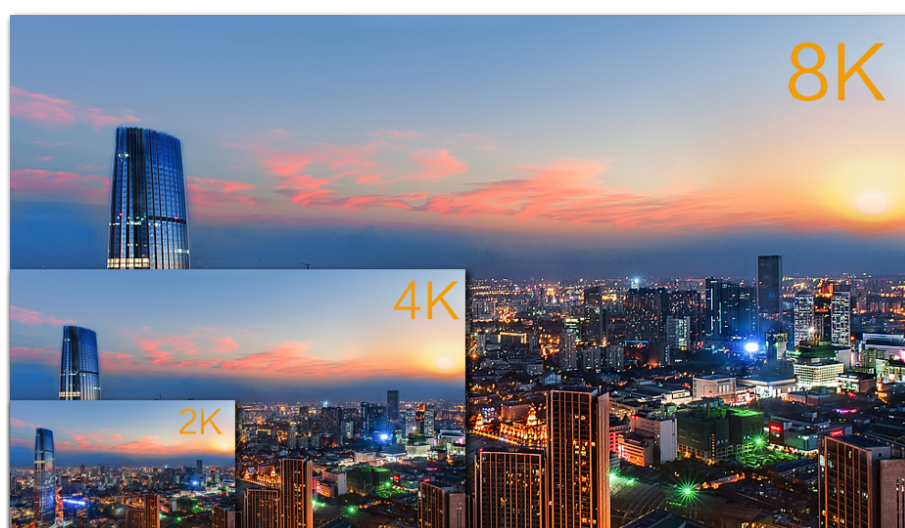
160° super wide viewing angle



Can have clear picture with sharp viewing angle



16:9 aspect ratio cabinet size



It enables LED led display achieve full 2K/4K/8K displaying effect without compression.



High refresh frequency $\geq 3840\text{hz}$ makes the display with no flickers when take photos

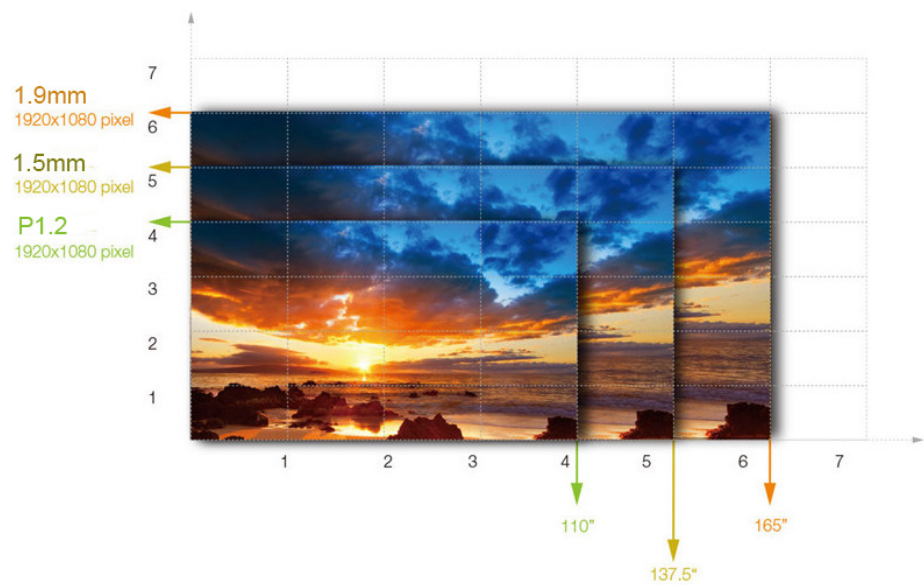
Low brightness with high grey level make the display images more vivid.



Gracier Pro

Redundant Signal (Dual receiving card)

Gracier Pro PARAMETER						
Pixel Pitch	P1.2	P1.5	P1.875	P1.9	P2.5	
LED Type	SMD1010 (R/G/B)	SMD1010 (R/G/B)	SMD1515 (R/G/B)	SMD1515 (R/G/B)	SMD2020 (R/G/B)	
Pixel Density/m²	619,360dots	396,390dots	284,089dots	275,270dots	146,810dots	
Module Dimension	152.43*171.54	152.43*171.54	152.43*343.08	152.43*343.08	152.43*343.08	
Cabinet Dimension	610*343mm	610*343mm	610*343mm	610*343mm	610*343mm	
Cabinet Material	Die cast alu	Die cast alu	die cast alu	die cast alu	die cast alu	
Cabinet weight	6kgs	6kgs	6kgs	6kgs	6kgs	
Maintenance way	Front/Rear	Front/Rear	Front/Rear	Front/Rear	Front/Rear	
Brightness	≥600nits	≥600nits	≥600nits	≥600nits	≥600nits	
Refresh Rate	≥3,840Hz	≥3,840Hz	≥3,840Hz	≥3,840Hz	≥3,840Hz	
Scan Mode	1/30	1/27	1/30	1/30	1/32	
Gray Scale	16bit	16bit	16bit	16bit	16bit	
Power consupction/m²	1050/350w/m²	760/255w/m²	700/235w/m²	700/235w/m²	570/190w/m²	
Contrast	8,000:1	8,000:1	8,000:1	8,000:1	8,000:1	
Viewing Angle	170°/170°	170°/170°	170°/170°	170°/170°	170°/170°	
Signal Connection	Redundant Signal (Dual receiving card) ,UTP cat5	Redundant Signal (Dual receiving card) ,UTP cat5	Redundant Signal (Dual receiving card) ,UTP cat5	Redundant Signal (Dual receiving card) ,UTP cat5	Redundant Signal (Dual receiving card) ,UTP cat5	
Input Voltage	AC110/240V	AC110/240V	AC110/240V	AC110/240V	AC110/240V	
Lifespan	≥100,000hrs	≥100,000hrs	≥100,000hrs	≥100,000hrs	≥100,000hrs	
MTBF	>10,000hrs	>10,000hrs	>10,000hrs	>10,000hrs	>10,000hrs	
Ingress Protection	IP20	IP20	IP20	IP20	IP20	
Working Environment	Indoor	Indoor	Indoor	Indoor	Indoor	



Cabinets Layout	2.5 mm	1.9 mm	1.5 mm	1.2 mm
1 x 1 = 2 cabinets	240*135	320*180	384*216	480*270
2 x 2 = 4 cabinets	480*270	640*360	768*432	960*540
3 x 3 = 9 cabinets	720*405	960*540	1152*648	1440*810
4 x 4 = 16 cabinets	960*540	1,280*720	1,536*864	1,920*1,080
5 x 5 = 25 cabinets	1,200*675	1,600*900	1,920*1,080	2,400*1,350
6 x 6 = 36 cabinets	1,440*810	1,920*1080	2,304*1,296	2,880*1,620
7 x 7 = 49 cabinets	1,680*945	2,240*1,260	2,688*1,512	3,360*1,890
8 x 8 = 64 cabinets	1,920*1080	2,560*1,440	3,072*1,728	3,840*2,160
9 x 9 = 81 cabinets	2,160*1215	2,880*1,620	3,456*1,944	4,320*2,430
10 x 10 = 100 cabinets	2,400*1350	3,200*1,800	3,840*2,160	4,800*2,700

Remark: Full HD = 1,920*1,080 2K = 2,560*1,440 4K = 3,840*2,160



1006/429 B Floor Master View Executive Place
Charoen Nakorn Road, Khlongsan, Bangkok 10600
Tel: 02-862-5459